


CELVAL COLOUR

Power to imagine

ALPHA

In the beginning was the Word

STANDARD



The manufacturing leader with coating solutions for building sustainability and green materials

Your partner to unique façade creation

Elval Colour products, **etalbond®**, **ENF™** and **orofo®**, can be coated in any colour together with special functional coatings, **agraphon®** and **arypon®**, each having an invaluable contribution to sustainable green building design.

A sustainable building envelope results in a significant reduction of the primary energy consumption of a building for heating, cooling and maintenance, while contributes to improved appearance and longevity of the façade, roof and building envelope in general. In Elval Colour, we have developed a series of products that are committed to the improvement of the environmental performance of buildings, increase the sustainability of building façades and roofing, and reduce their impact on the environment by being **fully recyclable** at any production step and at the end of their life as well.

With more than 40 years of experience in aluminium coating and colour matching, we can provide you with **reliable advice** in **product specification** and **selection to match the needs of the project or application** you undertake.

Our **personnel** are dedicated to seeing every step of the process through, from production to full delivery, and ready to contribute to the realisation of any architectural vision.

Our products are available with several **functional surfaces** that contribute to **scratch resistance, superior weathering performance, easy-clean, anti-graffiti, textured**, and come in many shades to match your creativity and imagination. They are ideal for new and renovation projects.

Elval Colour coatings are:

- Lead (Pb), Chrome (Cr) and Isophorone (IF) Free
- REACH compliant as per 1907/2006/EU
- RoHS compliant as per the Restriction of Hazardous Substances Directive 2002/95/EU

Our coating process complies with all European norms and quality standards BREF, DIN, ASTM, BS, EN, ISO and ECCA, has a zero liquid waste discharge system and is fully compliant with the Industrial Emissions' Directive (IED) 2010/75/EU.

For more information & guidelines, please contact us:
www.elval-colour.com/en/contact

CELVAL COLOUR

Power to imagine

ALPHA

s t a n d

s t a n d a r t

s t a n d a r d

s t

n d a r d c o l o u

c o l o u r

a r d

r d

t

c

c o l o u r

s t a n d a r d

c o l o u r

s t a n d a r d

c h a r t

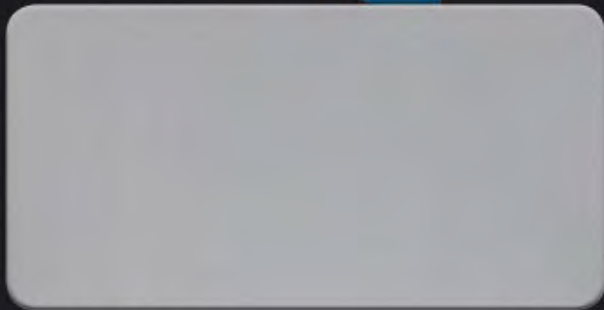
a r

a r t



Noval Argent Metallic

111



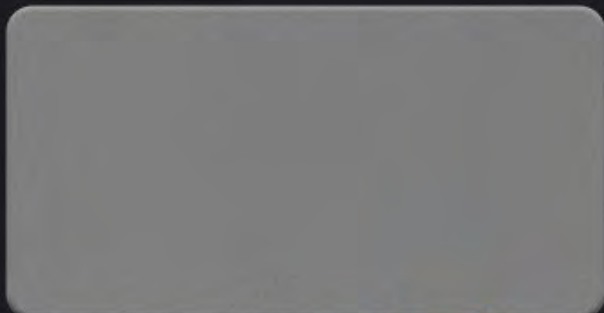
Silver Metallic

102



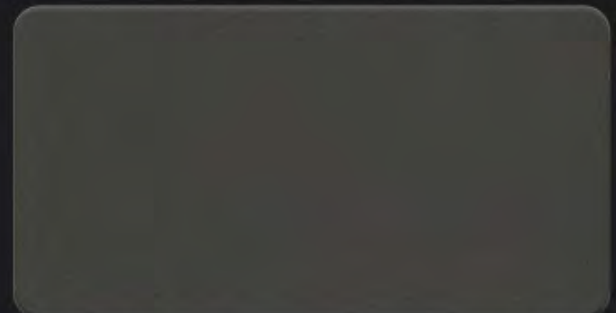
Silver White Metallic

916



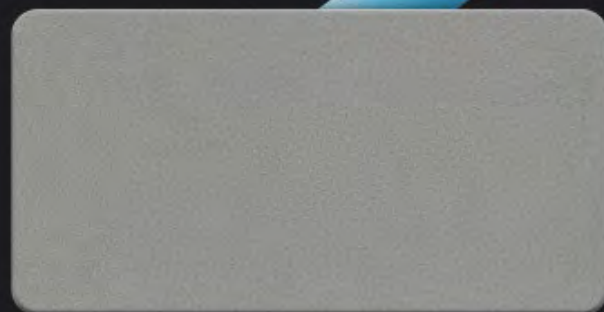
Silver Smoke Metallic

103



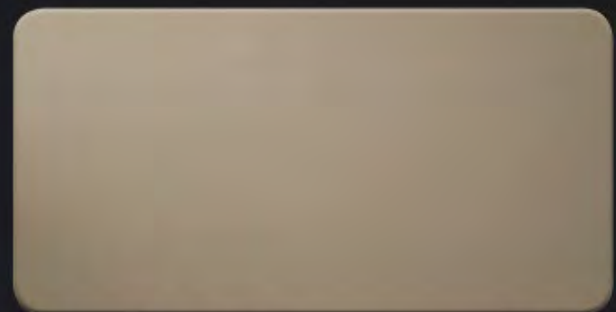
Grey Metallic

104



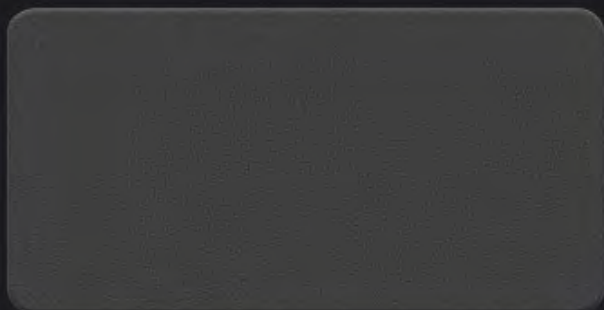
Champagne Metallic

105



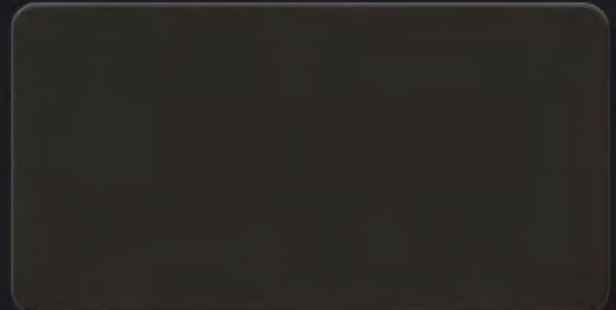
Noval Bronze Metallic

112



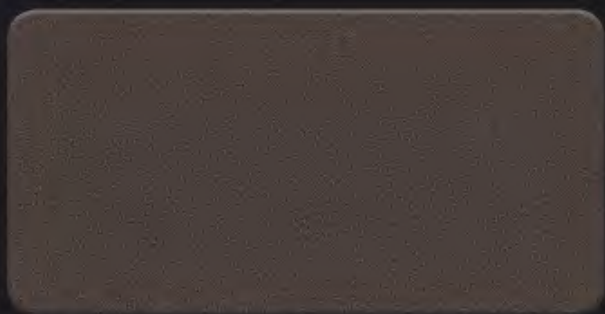
Dark Grey Metallic

310



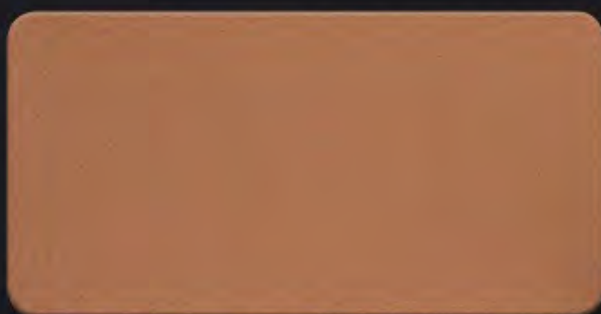
Dark Brown Metallic

318



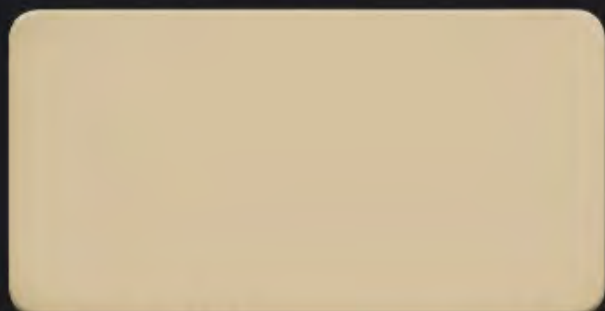
Coffee Brown Metallic

316



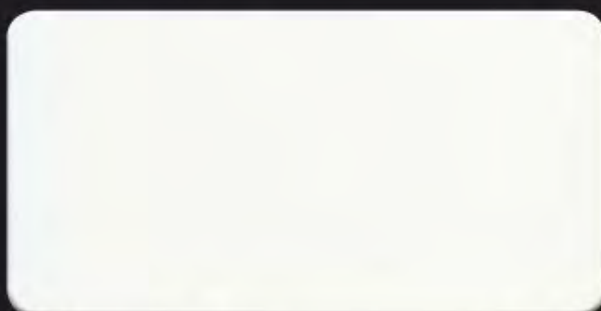
Vulcan Copper Metallic

314



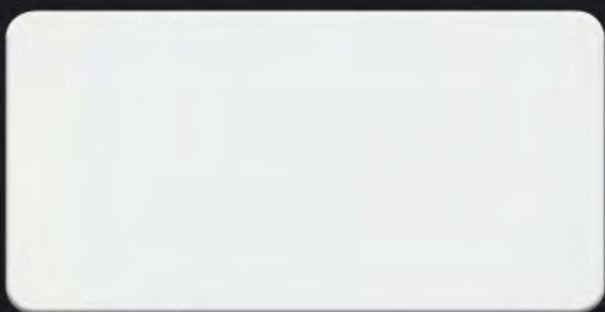
Acropolis Marble

212



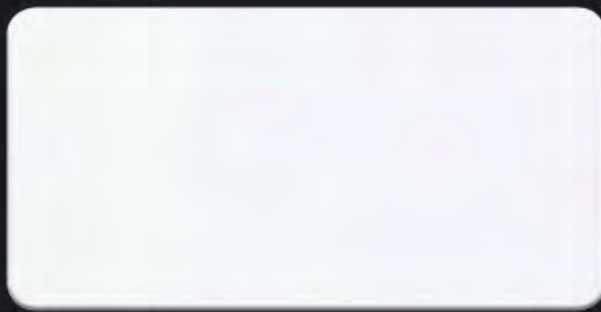
Acropolis White

211



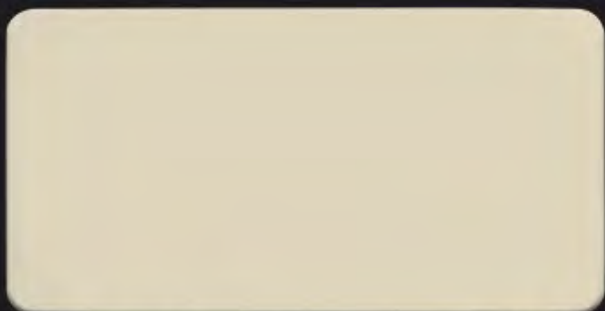
Angel White

201



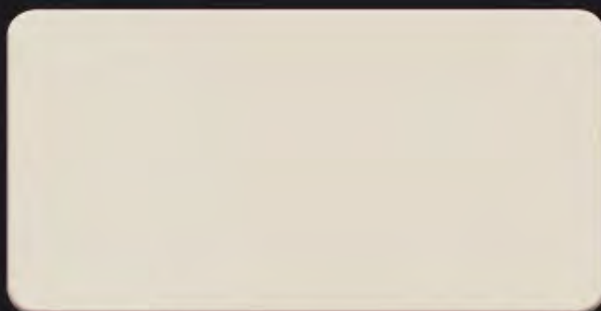
Pure White

918



Oyster White

202



Sugar White

432

s t a n d a r d

c h a r t

c o l o u r

s t a n d a r d

c o l o u r

c h
c o l o u r
s t a n d a r d

c h a r t

s t a n d a r d c o l o u r

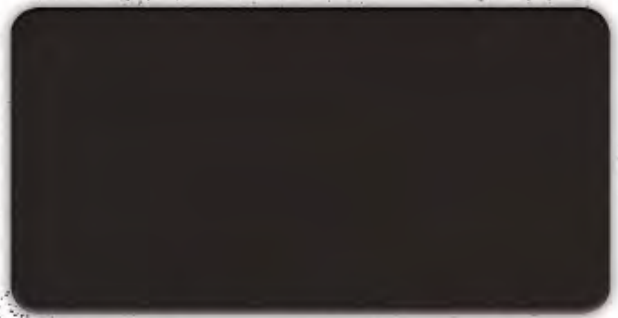
The presented colour collection is based on metal chips, cut out from real aluminium coils. Therefore, they are well placed as reference optical shade samples. As with all coating procedures, there might be a small degree of colour variation from batch to batch. In order to ensure colour consistency, we recommend placing a project order in one batch. All metallic and textured colours have to be installed following the arrow direction printed on the protective film and on the backside of the panel & coils in order to avoid colour variation. For etalbond® the enclosed colours are available in standard widths from 1000mm to 1500mm. Custom widths are also available upon request up to 2000mm. For ENF™ and orofe® products, the enclosed colours can be ordered in standard widths 600/1000/1250/1500mm, starting from a minimum order quantity of 1500m² per width and thickness.

ALPHA



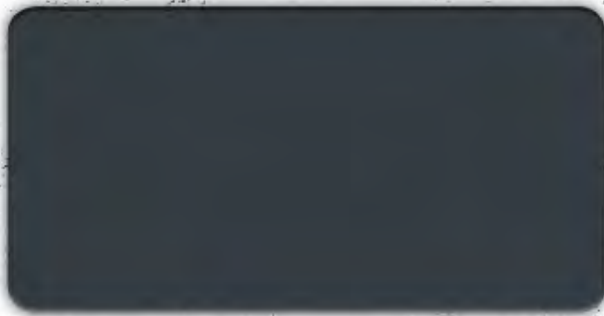
Orbit Black

430



Charcoal

320



Anthracite

428



Earth Grey

114



Graphite Grey

427



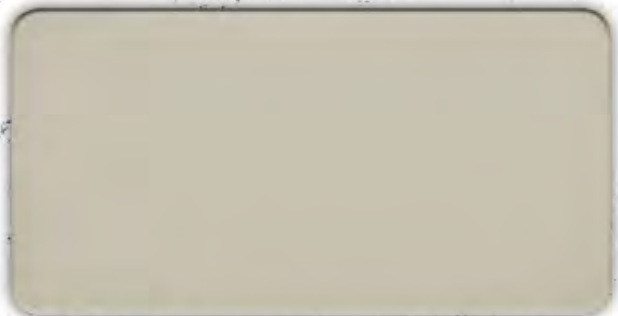
Cadet Grey

319



Canyon Grey

203



Sandstone

213



Pacific Blue

205



Laser Red

209



Elval Colour

3rd Km Inofyta Peripheral Rd.

32011, Saint Thomas, Viotia, Greece

tel: +30 22620 53564, fax: +30 22620 53581

ecs@elval-colour.com

www.elval-colour.com



ELVAL COLOUR
Power to imagine



VELVAL COLOUR

Power to imagine

PERFECT LIE

Make it possible

WOOD EFFECT

ELVAL COLOUR
Power to imagine

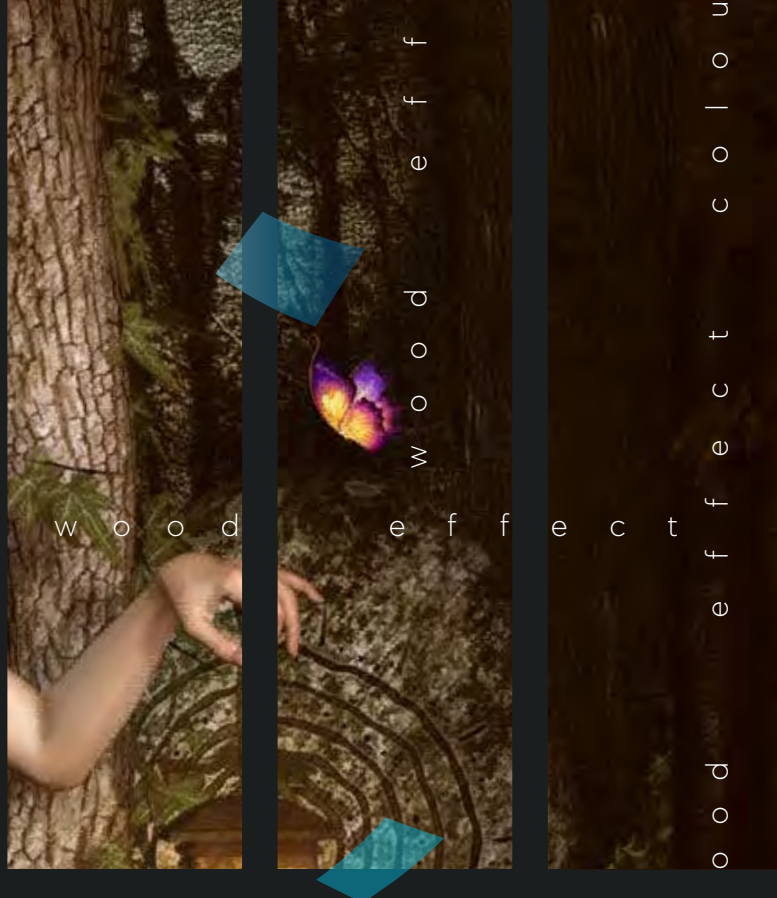
o o d e f f e c t

c h a r t

o l o u r c h a r t

PERFECT LIE

c o l o u r



The manufacturing leader with coating solutions for building sustainability and green materials **Your partner to unique façade creation**

Elval Colour products, **etalbond®** and **orofe®**, can be coated in any colour together with special functional coatings, **agraphon®** and **arypon®**, each having an invaluable contribution to sustainable green building design.

A sustainable building envelope results in a significant reduction of the primary energy consumption of a building for heating, cooling and maintenance, while contributes to improved appearance and longevity of the façade, roof and building envelope in general. In Elval Colour, we have developed a series of products that are committed to the improvement of the environmental performance of buildings, increase the sustainability of building façades and roofing, and reduce their impact on the environment by being **fully recyclable** at any production step and at the end of their life as well.

With more than 40 years of experience in aluminium coating and colour matching, we can provide you with **reliable advice** in **product specification** and **selection to match the needs of the project or application** you undertake.

Our **personnel** are dedicated to seeing every step of the process through, from production to full delivery, and ready to contribute to the realisation of any architectural vision.

Our products are available with several **functional surfaces** that contribute to **scratch resistance, superior weathering performance, easy-clean, anti-graffiti, textured**, and come in many shades to match your creativity and imagination. They are ideal for new and renovation projects.

Elval Colour coatings are:

- **Lead (Pb), Chrome (Cr) and Isophorone (IF) Free**
- **REACH compliant as per 1907/2006/EU**
- **RoHS compliant as per the Restriction of Hazardous Substances Directive 2002/95/EU**

Our coating process complies with all European norms and quality standards BREF, DIN, ASTM, BS, EN, ISO and ECCA, has a zero liquid waste discharge system and is fully compliant with the Industrial Emissions' Directive (IED) 2010/75/EU.

For more information & guidelines, please contact us:
www.elval-colour.com/en/contact

The presented colour collection is based on metal chips, cut out from real aluminium coils. Therefore, they are well placed as reference optical shade samples. As with all coating procedures, there might be a small degree of colour variation from batch to batch. In order to ensure colour consistency, we recommend placing a project order in one batch. All metallic and textured colours have to be installed following the arrow direction printed on the protective film and on the backside of the panel & coils in order to avoid colour variation. For etalbond® the enclosed colours are available in standard widths from 1000mm to 1500mm. Custom widths are also available upon request up to 1600mm. For orofe® product, the enclosed be ordered in standard widths 600/1000/1250/1500mm, starting from a minimum order quantity of 1500m² per width and thickness.



Pale Ivory Oak

819



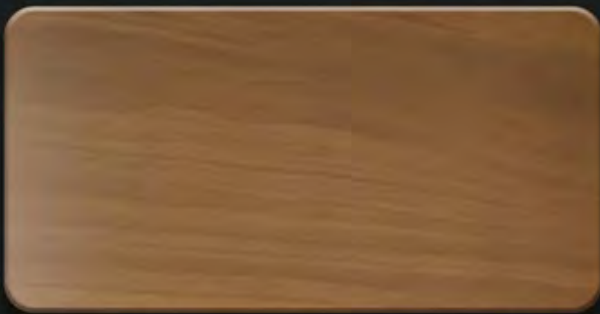
Golden Oak Light

809



Rovere Scuro

806



Cocoa Walnut

820



Red Mahogany

811



Elval Colour

3rd Km Inofyta Peripheral Rd.

32011, Saint Thomas, Viotia, Greece

tel: +30 22620 53564, fax: +30 22620 53581

ecs@elval-colour.com

www.elval-colour.com



ELVAL COLOUR
Power to imagine

ELVAL COLOUR
Power to imagine

CERAMIC STYLE

DUST & FIRE

Sculpt your vision out of colours



ELVAL COLOUR

Power to imagine

DUST & FIRE

The manufacturing leader with coating solutions for building sustainability and green materials **Your partner to unique façade creation**

Elval Colour products, **etalbond®**, **ENFTM** and **orofe®**, can be coated in any colour together with special functional coatings, **agraphon®** and **arypon®**, each having an invaluable contribution to sustainable green building design.

A sustainable building envelope results in a significant reduction of the primary energy consumption of a building for heating, cooling and maintenance, while contributes to improved appearance and longevity of the façade, roof and building envelope in general. In Elval Colour, we have developed a series of products that are committed to the improvement of the environmental performance of buildings, increase the sustainability of building façades and roofing, and reduce their impact on the environment by being **fully recyclable** at any production step and at the end of their life as well.

With more than 40 years of experience in aluminium coating and colour matching, we can provide you with **reliable advice** in **product specification** and **selection to match the needs of the project or application** you undertake.

Our **personnel** are dedicated to seeing every step of the process through, from production to full delivery, and ready to contribute to the realisation of any architectural vision.

Our products are available with several **functional surfaces** that contribute to **scratch resistance, superior weathering performance, easy-clean, anti-graffiti, textured**, and come in many shades to match your creativity and imagination. They are ideal for new and renovation projects.

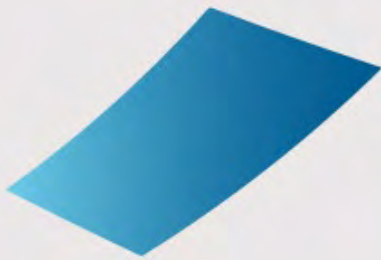
Elval Colour coatings are:

- Lead (Pb), Chrome (Cr) and Isophorone (IF) Free
- REACH compliant as per 1907/2006/EU
- RoHS compliant as per the Restriction of Hazardous Substances Directive 2002/95/EU

Our coating process complies with all European norms and quality standards BREF, DIN, ASTM, BS, EN, ISO and ECCA, has a zero liquid waste discharge system and is fully compliant with the Industrial Emissions' Directive (IED) 2010/75/EU.

For more information & guidelines, please contact us:
www.elval-colour.com/en/contact

The presented colour collection is based on metal chips, cut out from real aluminium coils. Therefore, they are well placed as reference optical shade samples. As with all coating procedures, there might be a small degree of colour variation from batch to batch. In order to ensure colour consistency, we recommend placing a project order in one batch. All metallic and textured colours have to be installed following the arrow direction printed on the protective film and on the backside of the panel & coils in order to avoid colour variation. For etalbond® the enclosed colours are available in standard widths from 1000mm to 1500mm. Custom widths are also available upon request up to 2000mm. For ENFTM and orofe® products, the enclosed colours can be ordered in standard widths 600/1000/1250/1500mm, starting from a minimum order quantity of 1500m² per width and thickness.



TX Anthracite

920



TX Ceramic Red

921



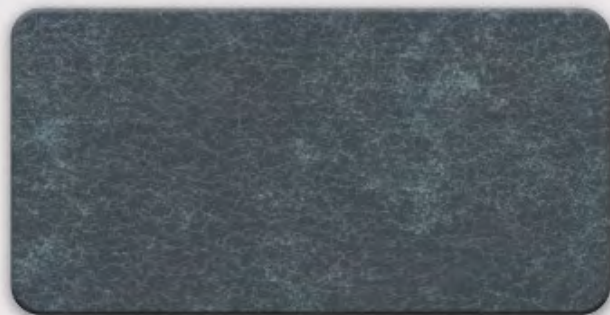
TX Alpine Grey

923



TX Olive Brown

919



TX Velvet Grey

924



TX Metallic Grau

922



TX Velvet Zinc

925



TX Velvet Basalt

926



Elval Colour

3rd Km Inofyta Peripheral Rd.

32011, Saint Thomas, Viotia, Greece

tel: +30 22620 53564, fax: +30 22620 53581

ecs@elval-colour.com

www.elval-colour.com



ELVAL COLOUR
Power to imagine



VELVAL COLOUR

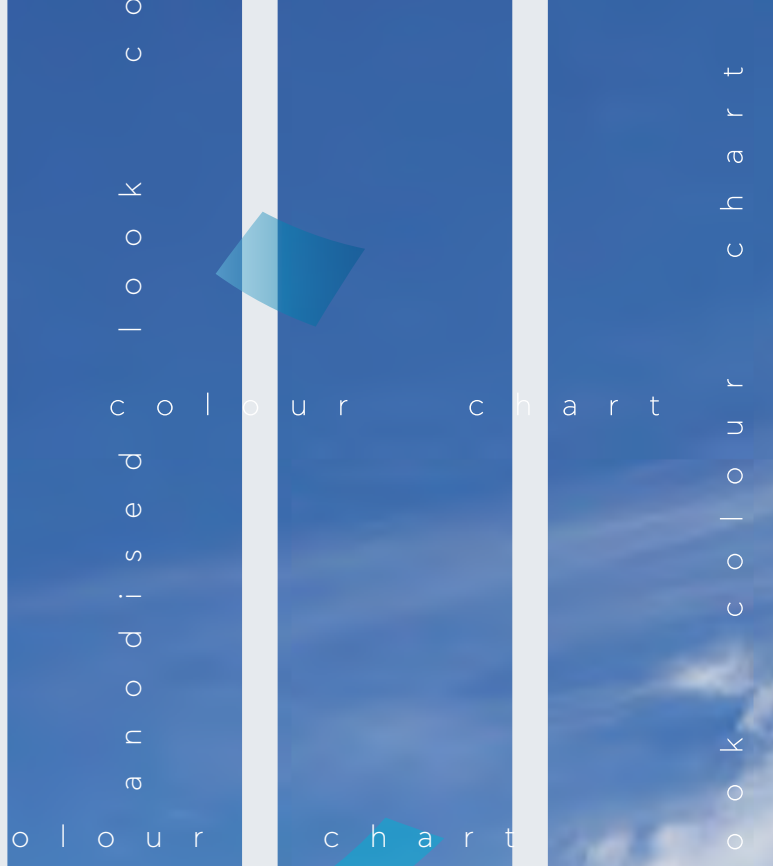


Power to imagine

FUTURE CLASSIC

Ever lasting choice

ANODISED LOOK



The manufacturing leader with coating solutions for building sustainability and green materials **Your partner to unique façade creation**

Elval Colour products, **etalbond®**, **ENF™** and **orofe®**, can be coated in any colour together with special functional coatings, **agraphon®** and **arypon®**, each having an invaluable contribution to sustainable green building design.

A sustainable building envelope results in a significant reduction of the primary energy consumption of a building for heating, cooling and maintenance, while contributes to improved appearance and longevity of the façade, roof and building envelope in general. In Elval Colour, we have developed a series of products that are committed to the improvement of the environmental performance of buildings, increase the sustainability of building façades and roofing, and reduce their impact on the environment by being **fully recyclable** at any production step and at the end of their life as well.

With more than 40 years of experience in aluminium coating and colour matching, we can provide you with **reliable advice** in **product specification** and **selection to match the needs of the project or application** you undertake.

Our **personnel** are dedicated to seeing every step of the process through, from production to full delivery, and ready to contribute to the realisation of any architectural vision.

Our products are available with several **functional surfaces** that contribute to **scratch resistance, superior weathering performance, easy-clean, anti-graffiti, textured**, and come in many shades to match your creativity and imagination. They are ideal for new and renovation projects.

Elval Colour coatings are:

- Lead (Pb), Chrome (Cr) and Isophorone (IF) Free
- REACH compliant as per 1907/2006/EU
- RoHS compliant as per the Restriction of Hazardous Substances Directive 2002/95/EU

Our coating process complies with all European norms and quality standards BREF, DIN, ASTM, BS, EN, ISO and ECCA, has a zero liquid waste discharge system and is fully compliant with the Industrial Emissions' Directive (IED) 2010/75/EU.

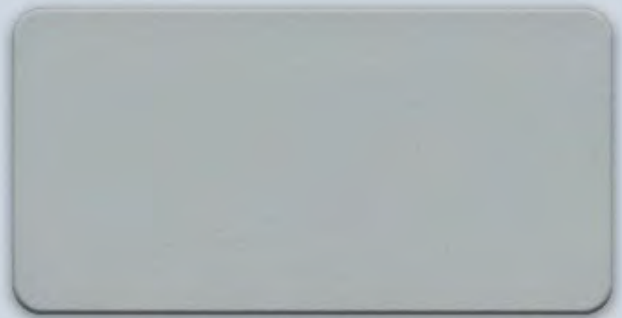
For more information & guidelines, please contact us:
www.elval-colour.com/en/contact

The presented colour collection is based on metal chips, cut out from real aluminium coils. Therefore, they are well placed as reference optical shade samples. As with all coating procedures, there might be a small degree of colour variation from batch to batch. In order to ensure colour consistency, we recommend placing a project order in one batch. All metallic and textured colours have to be installed following the arrow direction printed on the protective film and on the backside of the panel & coils in order to avoid colour variation. For etalbond® the enclosed colours are available in standard widths from 1000mm to 1500mm. Custom widths are also available upon request up to 2000mm. For ENF™ and orofe® products, the enclosed colours can be ordered in standard widths 600/1000/1250/1500mm, starting from a minimum order quantity of 1500m² per width and thickness.



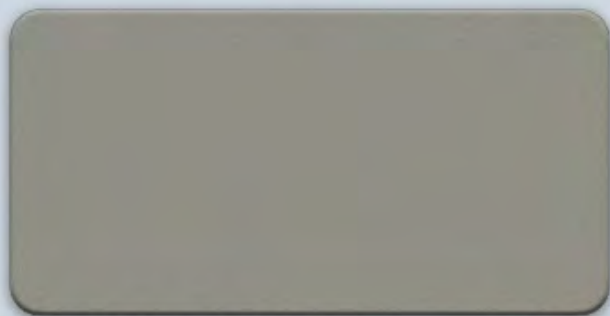
Anodised Look C0/EV1

955



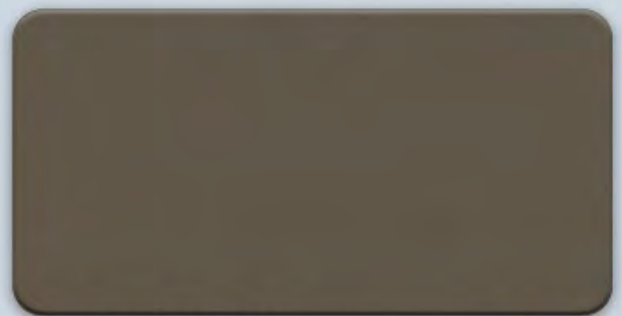
Anodised Look Silver C0

953



Anodised Look C31

958



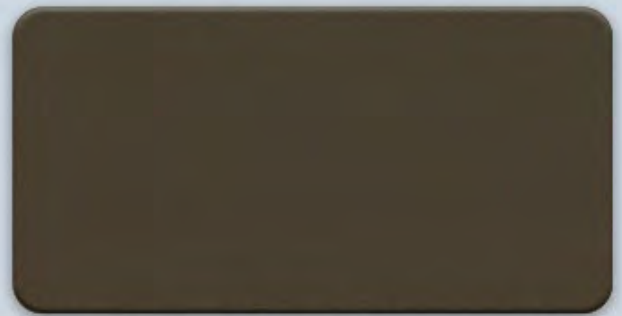
Anodised Look C32

960



Anodised Look Mid Bronze C33

957



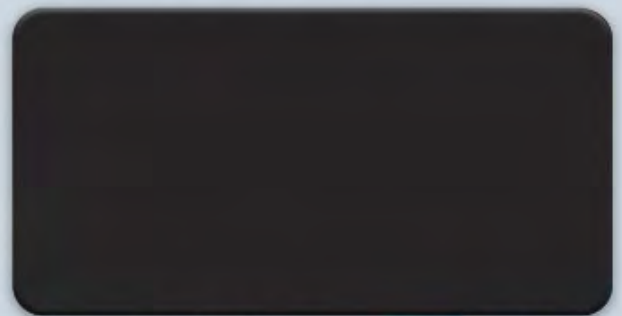
Anodised Look Bronze C2

956



Anodised Look Black C35

954



Anodised Look C34

959



Elval Colour

3rd Km Inofyta Peripheral Rd.

32011, Saint Thomas, Viotia, Greece

tel: +30 22620 53564, fax: +30 22620 53581

ecs@elval-colour.com

www.elval-colour.com



ELVAL COLOUR
Power to imagine

A high-contrast, artistic photograph featuring a single, large, golden-yellow oil drop falling from the top center. The drop is in the process of splashing, creating a crown-like shape on a bed of fine, black sand. Scattered across the sand are several smooth, white, rounded pebbles of varying sizes. The background is dark and textured. In the top left corner, there is a blue geometric overlay containing the 'ELVAL COLOUR' logo and tagline. In the bottom right, the product name 'ELEMENT 79' is written vertically in large white letters, with a tagline below it. The overall aesthetic is one of luxury and natural beauty.

ELVAL COLOUR

Power to imagine

ELEMENT 79

Precious thoughts out of earth

GOLDEN STYLE

ELVAL COLOUR

Power to imagine

golden style

colour chart

golden style

colour chart

golden style colour chart

ELEMENT 79

golden style colour chart

The manufacturing leader with coating solutions
for building sustainability and green materials

Your partner to unique façade creation

Elval Colour products, **etalbond®**, **ENF™** and **orofe®**, can be coated in any colour together with special functional coatings, **agraphon®** and **arypon®**, each having an invaluable contribution to sustainable green building design.

A sustainable building envelope results in a significant reduction of the primary energy consumption of a building for heating, cooling and maintenance, while contributes to improved appearance and longevity of the façade, roof and building envelope in general. In Elval Colour, we have developed a series of products that are committed to the improvement of the environmental performance of buildings, increase the sustainability of building façades and roofing, and reduce their impact on the environment by being **fully recyclable** at any production step and at the end of their life as well.

With more than 40 years of experience in aluminium coating and colour matching, we can provide you with **reliable advice in product specification and selection to match the needs of the project or application** you undertake.

Our **personnel** are dedicated to seeing every step of the process through, from production to full delivery, and ready to contribute to the realisation of any architectural vision.

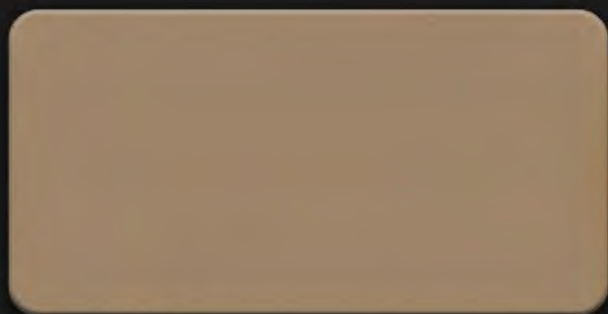
Our products are available with several **functional surfaces** that contribute to **scratch resistance, superior weathering performance, easy-clean, anti-graffiti, textured**, and come in many shades to match your creativity and imagination. They are ideal for new and renovation projects.

Elval Colour coatings are:

- **Lead (Pb), Chrome (Cr) and Isopharone (IF) Free**
 - **REACH compliant as per 1907/2006/EU**
 - **RoHS compliant as per the Restriction of Hazardous Substances Directive 2002/95/EU**
- Our coating process complies with all European norms and quality standards BREF, DIN, ASTM, BS, EN, ISO and ECCA, has a zero liquid waste discharge system and is fully compliant with the Industrial Emissions' Directive (IED) 2010/75/EU.*

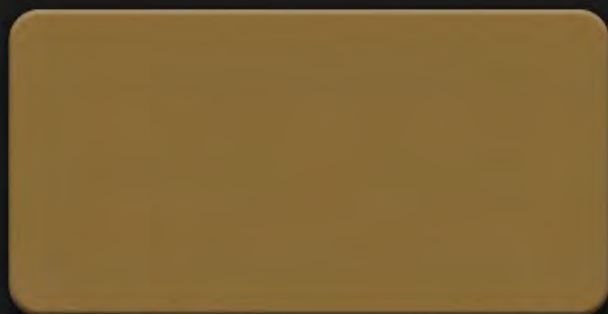
For more information & guidelines, please contact us:
www.elval-colour.com/en/contact

The presented colour collection is based on metal chips, cut out from real aluminium coils. Therefore, they are well placed as reference optical shade samples. As with all coating procedures, there might be a small degree of colour variation from batch to batch. In order to ensure colour consistency, we recommend placing a project order in one batch. All metallic and textured colours have to be installed following the arrow direction printed on the protective film and on the backside of the panel & coils in order to avoid colour variation. For **etalbond®** the enclosed colours are available in standard widths from 1000mm to 1500mm. Custom widths are also available upon request up to 2000mm. For **ENF™** and **orofe®** products, the enclosed colours can be ordered in standard widths 600/1000/1250/1500mm, starting from a minimum order quantity of 1500m² per width and thickness.



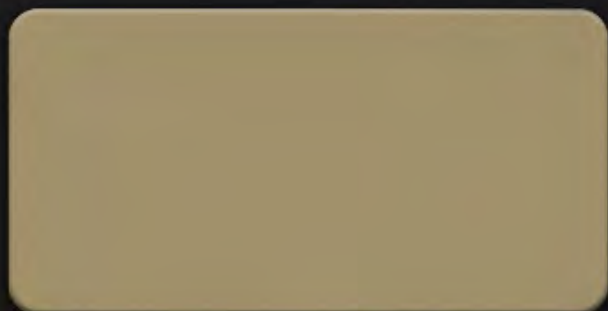
Apple Gold

976



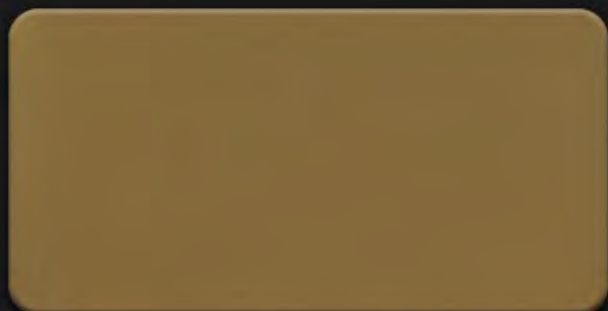
Sand Gold

975



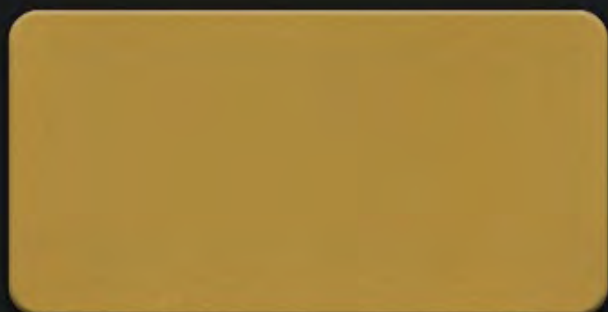
Cannan Gold

971



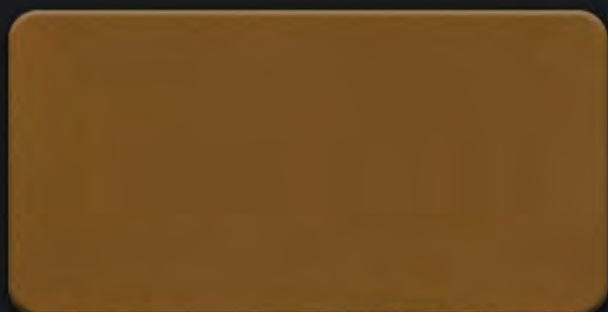
Gold Metallic

972



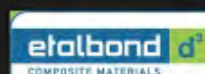
Theater Gold

973



Pearl Gold

974



Elval Colour

3rd Km Inofyta Peripheral Rd.

32011, Saint Thomas, Viotia, Greece

tel: +30 22620 53564, fax: +30 22620 53581

ecs@elval-colour.com

www.elval-colour.com



ELVAL COLOUR
Power to imagine

VELVAL COLOUR



Power to imagine

DUAL

IRIS
Colour Duets

d u a l

d u a l

u r — c h a r t

d u a l

c o l o u r

c h

d u a l c o

IRIS

The manufacturing leader with coating solutions for building sustainability and green materials **Your partner to unique façade creation**

Elval Colour products, **etalbond®**, **ENF™** and **orofe®**, can be coated in any colour together with special functional coatings, **agraphon®** and **arypon®**, each having an invaluable contribution to sustainable green building design.

A sustainable building envelope results in a significant reduction of the primary energy consumption of a building for heating, cooling and maintenance, while contributes to improved appearance and longevity of the façade, roof and building envelope in general. In Elval Colour, we have developed a series of products that are committed to the improvement of the environmental performance of buildings, increase the sustainability of building façades and roofing, and reduce their impact on the environment by being **fully recyclable** at any production step and at the end of their life as well.

With more than 40 years of experience in aluminium coating and colour matching, we can provide you with **reliable advice in product specification** and **selection to match the needs of the project or application** you undertake.

Our **personnel** are dedicated to seeing every step of the process through, from production to full delivery, and ready to contribute to the realisation of any architectural vision.

Our products are available with several **functional surfaces** that contribute to **scratch resistance, superior weathering performance, easy-clean, anti-graffiti, textured**, and come in many shades to match your creativity and imagination. They are ideal for new and renovation projects.

Elval Colour coatings are:

- Lead (Pb), Chrome (Cr) and Isophorone (IF) Free
 - REACH compliant as per 1907/2006/EU
 - RoHS compliant as per the Restriction of Hazardous Substances Directive 2002/95/EU
- Our coating process complies with all European norms and quality standards BREF, DIN, ASTM, BS, EN, ISO and ECCA, has a zero liquid waste discharge system and is fully compliant with the Industrial Emissions' Directive (IED) 2010/75/EU.*

For more information & guidelines, please contact us:
www.elval-colour.com/en/contact

The presented colour collection is based on metal chips, cut out from real aluminium coils. Therefore, they are well placed as reference optical shade samples. As with all coating procedures, there might be a small degree of colour variation from batch to batch. In order to ensure colour consistency, we recommend placing a project order in one batch. All metallic and textured colours have to be installed following the arrow direction printed on the protective film and on the backside of the panel & coils in order to avoid colour variation. For etalbond® the enclosed colours are available in standard widths from 1000mm to 1500mm. Custom widths are also available upon request up to 2000mm. For ENF™ and orofe® products, the enclosed colours can be ordered in standard widths 600/1000/1250/1500mm, starting from a minimum order quantity of 1500m² per width and thickness.



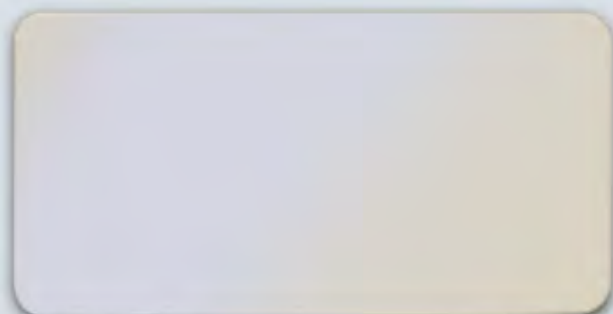
Orange Gold

702



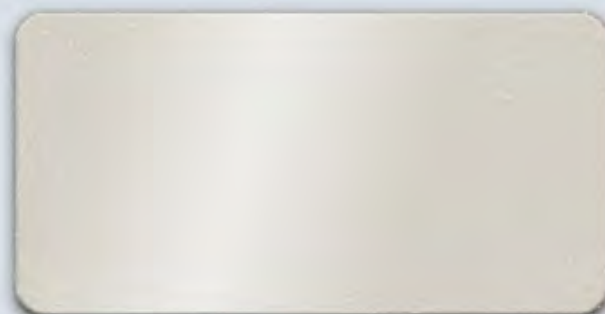
Orange Red

705



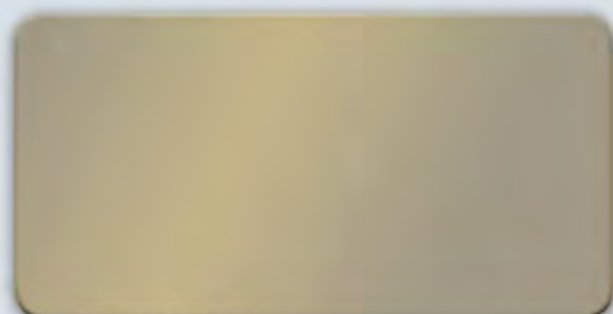
White Blue

701



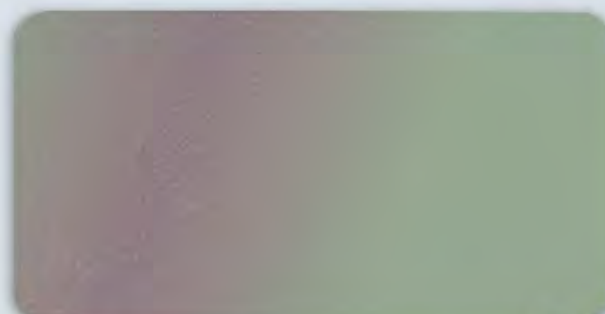
Pearl White

706



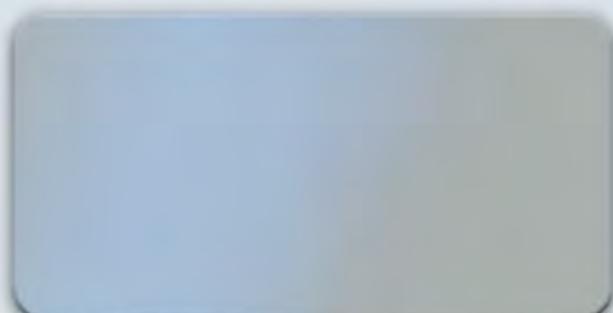
Pyr-Gold Silver

945



Sakura

948



Sky Blue

949



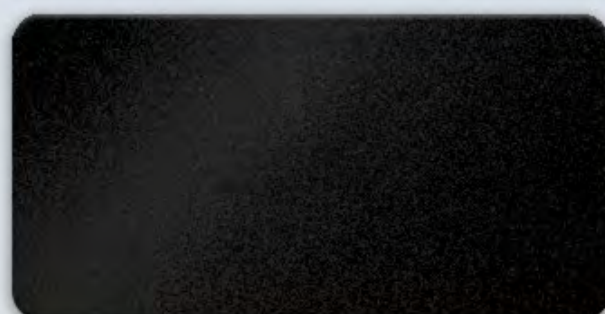
Ocean Blue

950



Anthracite Silver

964



Sparkling Black

965



Elval Colour

3rd Km Inofyta Peripheral Rd.

32011, Saint Thomas, Viotia, Greece

tel: +30 22620 53564, fax: +30 22620 53581

ecs@elval-colour.com

www.elval-colour.com



ELVAL COLOUR
Power to imagine



ELVAL COLOUR



Power to imagine

MATTE EFFECT

MATTE MATES

Opposites attract

ELVAL COLOUR

Power to imagine

m a t t e e f f e c t

c o l o u r

c h a r t

c o l o u r

c h a r t

MATTE MATES

The manufacturing leader with coating solutions
for building sustainability and green materials

Your partner to unique façade creation

Elval Colour products, **etalbond®**, **ENF™** and **orofe®**, can be coated in any colour together with special functional coatings, **agraphon®** and **arypon®**, each having an invaluable contribution to sustainable green building design.

A sustainable building envelope results in a significant reduction of the primary energy consumption of a building for heating, cooling and maintenance, while contributes to improved appearance and longevity of the façade, roof and building envelope in general. In Elval Colour, we have developed a series of products that are committed to the improvement of the environmental performance of buildings, increase the sustainability of building façades and roofing, and reduce their impact on the environment by being **fully recyclable** at any production step and at the end of their life as well.

With more than 40 years of experience in aluminium coating and colour matching, we can provide you with **reliable advice in product specification** and **selection to match the needs of the project or application** you undertake.

Our **personnel** are dedicated to seeing every step of the process through, from production to full delivery, and ready to contribute to the realisation of any architectural vision.

Our products are available with several **functional surfaces** that contribute to **scratch resistance, superior weathering performance, easy-clean, anti-graffiti, textured**, and come in many shades to match your creativity and imagination. They are ideal for new and renovation projects.

Elval Colour coatings are:

- Lead (Pb), Chrome (Cr) and Isophorone (IF) Free
- REACH compliant as per 1907/2006/EU
- RoHS compliant as per the Restriction of Hazardous Substances Directive 2002/95/EU

Our coating process complies with all European norms and quality standards BREF, DIN, ASTM, BS, EN, ISO and ECCA, has a zero liquid waste discharge system and is fully compliant with the Industrial Emissions' Directive (IED) 2010/75/EU.

For more information & guidelines, please contact us:

www.elval-colour.com/en/contact

The presented colour collection is based on metal chips, cut out from real aluminium coils. Therefore, they are well placed as reference optical shade samples. As with all coating procedures, there might be a small degree of colour variation from batch to batch. In order to ensure colour consistency, we recommend placing a project order in one batch. All metallic and textured colours have to be installed following the arrow direction printed on the protective film and on the backside of the panel & coils in order to avoid colour variation. For etalbond® the enclosed colours are available in standard widths from 1000mm to 1500mm. Custom widths are also available upon request up to 2000mm. For ENF™ and orofe® products, the enclosed colours can be ordered in standard widths 600/1000/1250/1500mm, starting from a minimum order quantity of 1500m² per width and thickness.



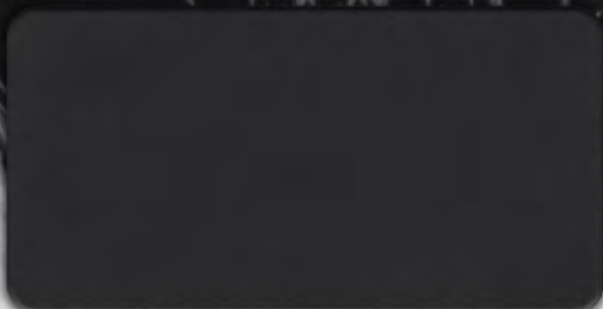
Orbit White

979



TX SJ 9016

817



Schwarz Grau

977



Jet Black

978



Elval Colour

3rd Km Inofyta Peripheral Rd.

32011, Saint Thomas, Viotia, Greece

tel: +30 22620 53564, fax: +30 22620 53581

ecs@elval-colour.com

www.elval-colour.com



ELVAL COLOUR
Power to imagine

DELVAL COLOUR



Power to imagine



METAL PATINAS

OLD BLUES

As the years go passing by





ELVAL COLOUR

Power to imagine

metal patinas colour chart

metal patinas colour chart

OLD BLUES



The manufacturing leader with coating solutions
for building sustainability and green materials

Your partner to unique façade creation

Elval Colour products, **etalbond®**, **ENF™** and **orofe®**, can be coated in any colour together with special functional coatings, **agraphon®** and **arypon®**, each having an invaluable contribution to sustainable green building design.

A sustainable building envelope results in a significant reduction of the primary energy consumption of a building for heating, cooling and maintenance, while contributes to improved appearance and longevity of the façade, roof and building envelope in general. In Elval Colour, we have developed a series of products that are committed to the improvement of the environmental performance of buildings, increase the sustainability of building façades and roofing, and reduce their impact on the environment by being **fully recyclable** at any production step and at the end of their life as well.

With more than 40 years of experience in aluminium coating and colour matching, we can provide you with **reliable advice** in **product specification** and **selection to match the needs of the project or application** you undertake.

Our **personnel** are dedicated to seeing every step of the process through, from production to full delivery, and ready to contribute to the realisation of any architectural vision.

Our products are available with several **functional surfaces** that contribute to **scratch resistance, superior weathering performance, easy-clean, anti-graffiti, textured**, and come in many shades to match your creativity and imagination. They are ideal for new and renovation projects.

Elval Colour coatings are:

- Lead (Pb), Chrome (Cr) and Isophorone (IF) Free

- REACH compliant as per 1907/2006/EU

- RoHS compliant as per the Restriction of Hazardous Substances Directive 2002/95/EU

Our coating process complies with all European norms and quality standards BREF, DIN, ASTM, BS, EN, ISO and ECCA, has a zero liquid waste discharge system and is fully compliant with the Industrial Emissions' Directive (IED) 2010/75/EU.

For more information & guidelines, please contact us:

www.elval-colour.com/en/contact

The presented colour collection is based on metal chips, cut out from real aluminium coils. Therefore, they are well placed as reference optical shade samples. As with all coating procedures, there might be a small degree of colour variation from batch to batch. In order to ensure colour consistency, we recommend placing a project order in one batch. All metallic and textured colours have to be installed following the arrow direction printed on the protective film and on the backside of the panel & coils in order to avoid colour variation. For etalbond® the enclosed colours are available in standard widths from 1000mm to 1500mm. Custom widths are also available upon request up to 2000mm. For ENF™ and orofe® products, the enclosed colours can be ordered in standard widths 600/1000/1250/1500mm, starting from a minimum order quantity of 1500m² per width and thickness.

metal patinas colour chart



Natural BR Brushed

963



Anodised Brushed

966



Gold Brushed

704



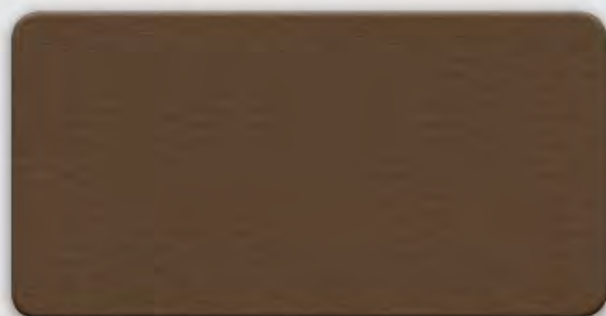
Dark Copper Brushed

321



Zinc Light Grey

962



Zinc Light Brown

928



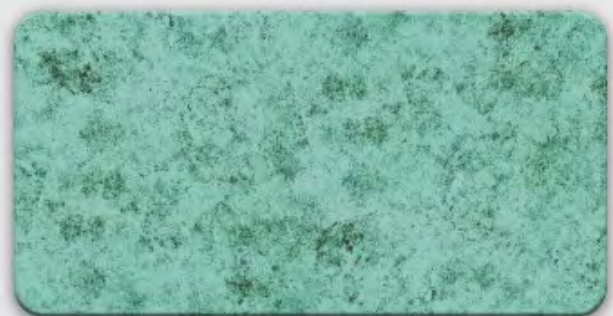
Zinc Dark Brown

929



Corten

915



Patina Verde

905



Patina Rame

906



Elval Colour

3rd Km Inofyta Peripheral Rd.

32011, Saint Thomas, Viotia, Greece

tel: +30 22620 53564, fax: +30 22620 53581

ecs@elval-colour.com

www.elval-colour.com



ELVAL COLOUR
Power to imagine

ELVAL COLOUR
Power to imagine



TEXTURED

PETRA

One look is enough

ELVAL COLOUR
Power to imagine

PETRA

textured colour chart

textured

colour chart

textured

The manufacturing leader with coating solutions for building sustainability and green materials **Your partner to unique façade creation**

Elval Colour products, **etalbond®**, **ENF™** and **orofe®**, can be coated in any colour together with special functional coatings, **agraphon®** and **arypon®**, each having an invaluable contribution to sustainable green building design.

A sustainable building envelope results in a significant reduction of the primary energy consumption of a building for heating, cooling and maintenance, while contributes to improved appearance and longevity of the façade, roof and building envelope in general. In Elval Colour, we have developed a series of products that are committed to the improvement of the environmental performance of buildings, increase the sustainability of building façades and roofing, and reduce their impact on the environment by being **fully recyclable** at any production step and at the end of their life as well.

With more than 40 years of experience in aluminium coating and colour matching, we can provide you with **reliable advice in product specification** and **selection to match the needs of the project or application** you undertake.

Our **personnel** are dedicated to seeing every step of the process through, from production to full delivery, and ready to contribute to the realisation of any architectural vision.

Our products are available with several **functional surfaces** that contribute to **scratch resistance, superior weathering performance, easy-clean, anti-graffiti, textured**, and come in many shades to match your creativity and imagination. They are ideal for new and renovation projects.

Elval Colour coatings are:

- Lead (Pb), Chrome (Cr) and Isophorone (IF) Free
- REACH compliant as per 1907/2006/EU
- RoHS compliant as per the Restriction of Hazardous Substances Directive 2002/95/EU

Our coating process complies with all European norms and quality standards BREF, DIN, ASTM, BS, EN, ISO and ECCA, has a zero liquid waste discharge system and is fully compliant with the Industrial Emissions' Directive (IED) 2010/75/EU.

For more information & guidelines, please contact us:
www.elval-colour.com/en/contact

The presented colour collection is based on metal chips, cut out from real aluminium coils. Therefore, they are well placed as reference optical shade samples. As with all coating procedures, there might be a small degree of colour variation from batch to batch. In order to ensure colour consistency, we recommend placing a project order in one batch. All metallic and textured colours have to be installed following the arrow direction printed on the protective film and on the backside of the panel & coils in order to avoid colour variation. For etalbond® the enclosed colours are available in standard widths from 1000mm to 1500mm. Custom widths are also available upon request up to 2000mm. For ENF™ and orofe® products, the enclosed colours can be ordered in standard widths 600/1000/1250/1500mm, starting from a minimum order quantity of 1500m² per width and thickness.



Ceramic Orbit Black

818



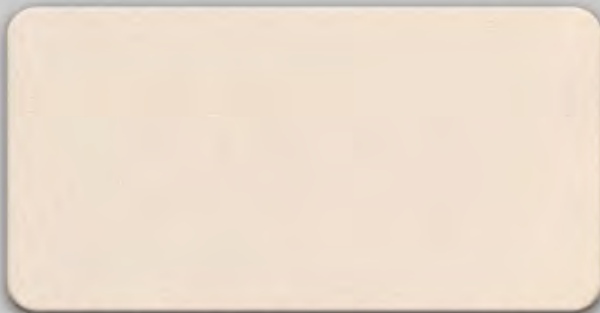
Basalt Black

816



Basalt Crème

815



GFRC Sahara Crème

967



Honed Limestone

986



Travertine Favale

968



Jerusalem Stone

969



Elval Colour

3rd Km Inofyta Peripheral Rd.

32011, Saint Thomas, Viotia, Greece

tel: +30 22620 53564, fax: +30 22620 53581

ecs@elval-colour.com

www.elval-colour.com



ELVAL COLOUR
Power to imagine

VELVAL COLOUR



Power to imagine

A N O D I S E D

ATOM
Designing Excellence

a n o d i s e d

c o l o u r c h a r t

a n o d i s e d

c o l o u r c h a r t

a n o d i s e d c o l o u r c h a r t

a n o d i s e d c o l o u r c h a r t

d i s e d c o l o u r c h a r t

ATOM

a n o d i s e d c o l o u r c h a r t

ATOM Designing Excellence

Anodising is an electrolytic process that increases the thickness of the natural oxide layer of the aluminium. The excellent metallic appearance of the result improves durability and increases corrosion resistance.

ATOM, the new anodised collection by Elval Colour, combines a thin anodising layer coupled with high durability thin organic layer and provides a superb and luxurious aesthetic result.

ATOM, offers increased corrosion resistance, exceptional durability, easy fabrication, environmental friendliness. Low thickness anodised layer provides elasticity which reveals the unlimited bending capabilities with non visible creasing or cracking.

Our collection provides unlimited possibilities to the architects with its technical characteristics and with a real variety of brushed, bright and natural metal shades. With more than **40 years** of solid experience in aluminium coating and colour matching, **Elval Colour** can offer reliable added-value services by assisting in product selection and specification to best match the needs of the project or application you undertake. Customer focus dedication follows the product from concept to production and delivery.

Our specialised personnel will assist you in identifying and implementing the best possible colour shade option for your building. Cost, quality, aesthetics and speed of delivery will all be optimised with a view to maximise the performance, weathering resistance, and visual impact of your project.

For more information & guidelines, please contact:
www.elval-colour.com/en/contact

The presented anodised collection is based on metal chips, cut out from real aluminium coils. Therefore, they are well placed as reference optical shade samples. As with all anodising/coating procedures, there might be a small degree of colour variation from batch to batch. In order to ensure colour consistency, we recommend placing a project order in one batch. All anodised colours have to be installed following the arrow direction printed on the protective film and on the backside of the panel & coils in order to avoid colour variation. The enclosed shade collection is available in 1250mm standard width. For tailor made projects, special widths are available with a minimum quantity of 500m² per width and thickness.



Anodised shades for unique façade creation



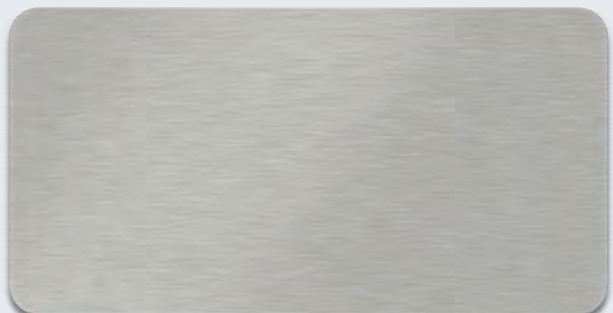
Copper Bright Brushed Anodised



Bronze Bright Brushed Anodised



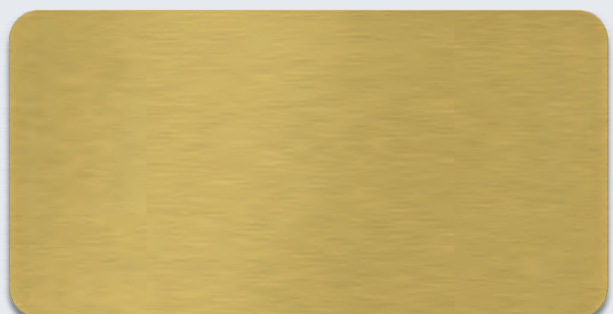
Scatter Gloss Anodised



Natural Bright Brushed Anodised



Gold Mirror Anodised



Gold Bright Brushed Anodised



Elval Colour

3rd Km Inofyta Peripheral Rd.

32011, Saint Thomas, Viotia, Greece

tel: +30 22620 53564, fax: +30 22620 53581

ecs@elval-colour.com

www.elval-colour.com



ELVAL COLOUR
Power to imagine